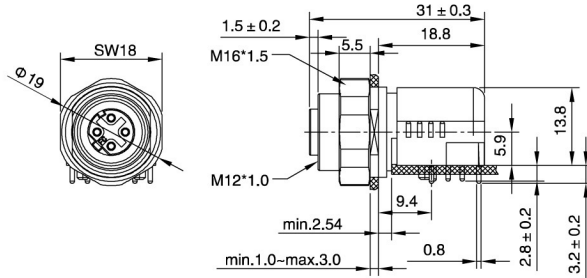




M12 Female Panel Mount, Angled, PCB Type, Shielded Shell, Without Fixed Holes

- Connector series: M12
- Gender: Female
- Coding: D
- Locking type: Fix screw
- Mounting type: Right angled
- Part No.: MB12FBSDF04RA-20



General information

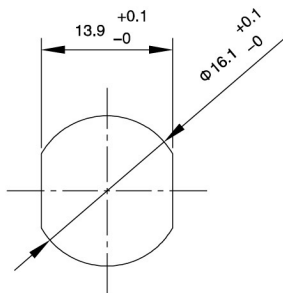
| | |
|----------------------|-------------------------------|
| Standard: | IEC 61076-2-101 |
| Ambient temperature: | -40°C ~ +90°C |
| Connector insert: | PA |
| Connector contacts: | Brass with gold plated |
| Connector nut/screw: | Brass with nickel plated |
| Connector body: | Brass with nickel plated |
| Shield Shell: | Zinc alloy with nickel plated |
| Seal / O-ring: | FKM |

| | |
|-------------------------------|-------------------------------|
| Insulation resistance: | ≥ 100MΩ |
| Contact resistance : | ≤ 5mΩ |
| Shielding: | Available |
| IP rating: | IP20 in locked condition |
| Transmission characteristics: | Cat. 5,D level: up to 100 MHz |
| Mating endurance: | >500 cycles |

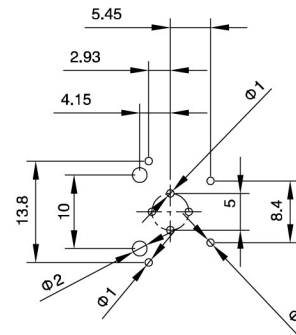
Electrical data & Mechanical data

| Contacts | Contacts termination | Rated current | Voltage | | Part No. |
|-------------|----------------------|---------------|---------|-----|------------------|
| | | | A/C | D/C | |
| 04 pins | PCB version | 4A | 50V | 50V | MB12FBSDF04RA-20 |

Panel Cut-out Dimensions



PCB Layout



Remarks

Recommended PCB thickness: 1.6mm

- Please refer to Page 96 for products' part number encoding rule.